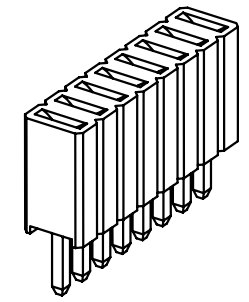
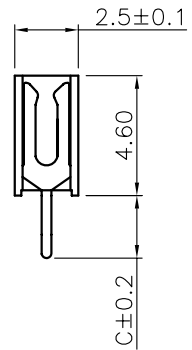
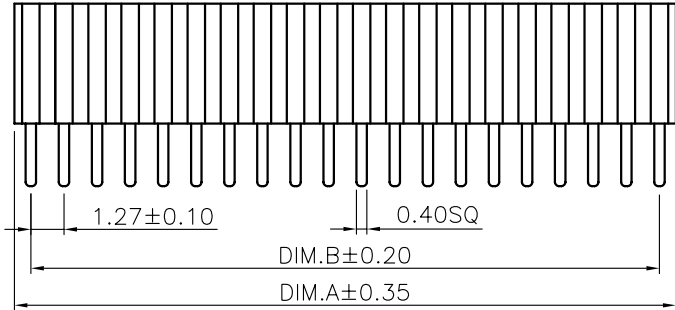




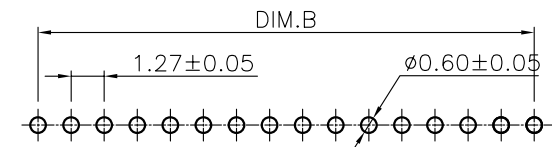
1



Specifications:

Current rating:1.0A AC/DC  
 Voltage rating:50V AC/DC  
 Contact resistance:20m ohm. max.  
 Insulation resistance:500M ohm. Min.  
 Withstanding voltage:500V AC for one minute  
 Operating temperature range:-25°C to +105°C  
 Material and Finish:  
 Insulator:High Temp. Plastic(PBT UL94V-0)  
 Standard Color:Black  
 Contact:Phosphor bronze  
 Plating:Gold Plated

Poles	DIM:(mm)		Poles	DIM:(mm)		Poles	DIM:(mm)		Poles	DIM:(mm)	
	A	B		A	B		A	B		A	B
2	2.54	1.27	15	19.05	17.78	28	35.56	34.29	41	52.07	50.80
3	3.81	2.54	16	20.32	19.05	29	36.83	35.56	42	53.34	52.07
4	5.08	3.81	17	21.59	20.32	30	38.10	36.83	43	54.61	53.34
5	6.35	5.08	18	22.86	21.59	31	39.37	38.10	44	55.88	54.61
6	7.62	6.35	19	24.13	22.86	32	40.64	39.37	45	57.15	55.88
7	8.89	7.62	20	25.40	24.13	33	41.91	40.64	46	58.42	57.15
8	10.16	8.89	21	26.67	25.40	34	43.18	41.91	47	59.69	58.42
9	11.43	10.16	22	27.94	26.67	35	44.45	43.18	48	60.96	59.69
10	12.70	11.43	23	29.21	27.94	36	45.72	44.45	49	62.23	60.96
11	13.97	12.70	24	30.48	29.21	37	46.99	45.72	50	63.50	62.23
12	15.24	13.97	25	31.75	30.48	38	48.26	46.99			
13	16.51	15.24	26	33.02	31.75	39	49.53	48.26			
14	17.78	16.51	27	34.29	33.02	40	50.80	49.53			



P.C.B. LAYOUT

RoHS Compliant



GENERAL TOLERANCE:

.X=±0.20  
 .XX=±0.15

UNIT: MM

SCALE:

SHEET: 1 / 1

PROJECTION:

DESCRIPTION:

1.27mm PCB Socket 4.6mm Height

PART NO:

PB40S-1.27MM

SIZE

**A4**