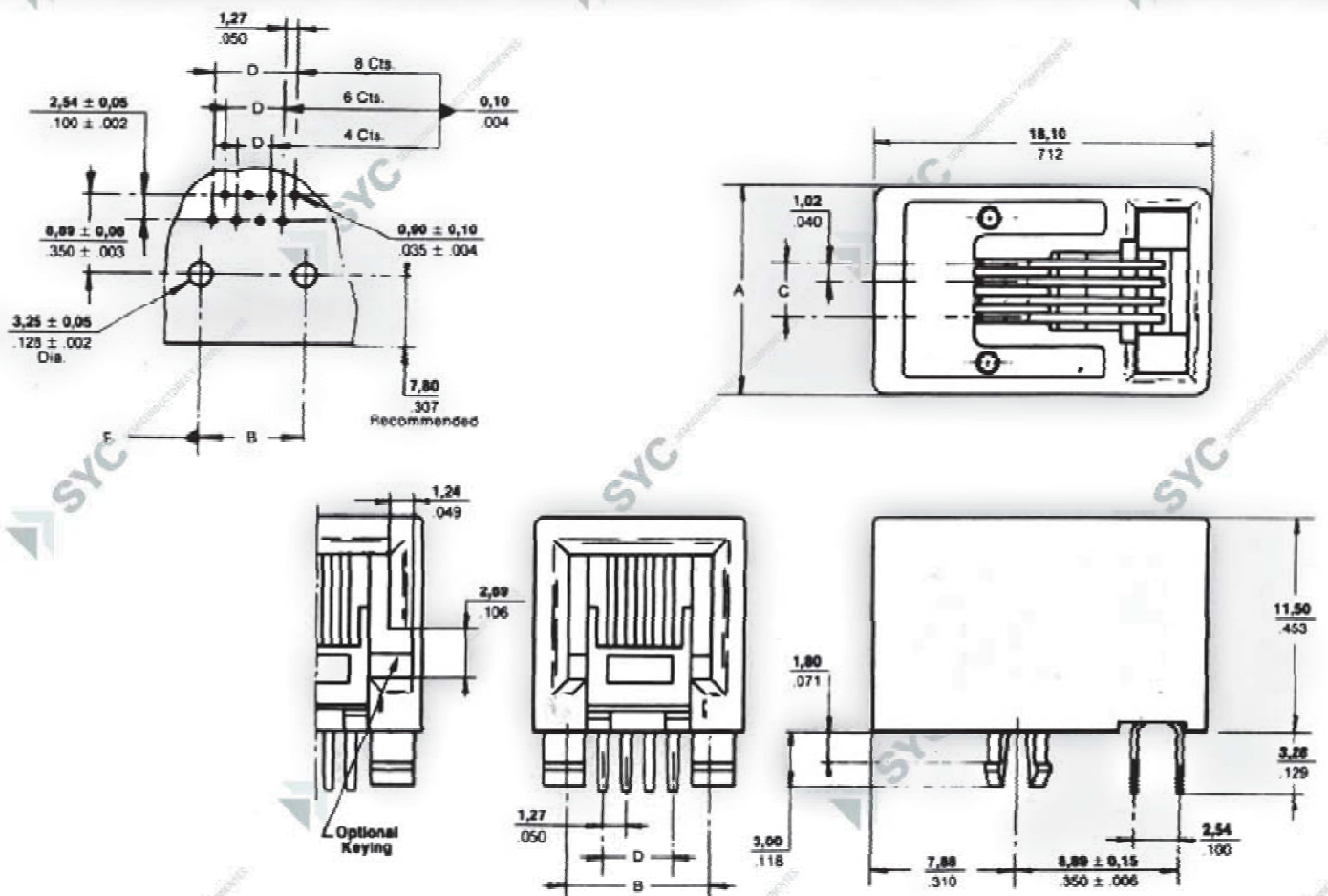


CODIGO

95001-XPXC

DESCRIPCION

Conector hembra de 90° a PCB de bajo perfil



CTS	LOADED CONTACTS	DIM.							
		A	B	C	D				
4	4	11.18	400	7.82	300	3.05	.120	3.81	.150
6	4	13.21	520	10.16	400	3.05	.120	3.81	.150
6	6	13.21	520	10.16	400	5.08	.200	6.35	.250
8	6	15.24	600	11.43	450	5.08	.200	6.35	.250
8	8	15.24	600	11.43	450	7.11	.280	8.89	.350