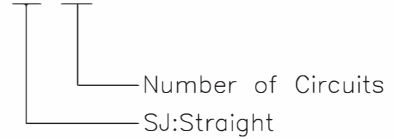


Specifications:

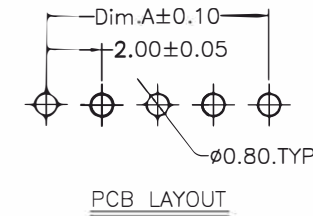
Current rating: 2.0A AC,DC
 Voltage rating: 125V AC,DC
 Contact resistance: 20m ohm.Max
 Insulation resistance: 1000M ohm.Min
 Withstanding voltage: 500V AC/minute
 Operating temperature range: $-40^{\circ}\text{C} \sim +85^{\circ}\text{C}$
 Material:
 Insulator: High Temp. Plastic (Nylon66 UL94V-0)
 Default color: White
 Contact: Brass
 Plated: Tin Plated

How To Order:
 2417SJ-XX



Dimension:

Circuits	Dimension:			Circuits	Dimension:		
	A	B	C		A	B	C
02	2.00	6.00	0.75	09	16.00	20.00	14.00
03	4.00	8.00	2.00	10	18.00	22.00	16.00
04	6.00	10.00	4.00	11	20.00	24.00	18.00
05	8.00	12.00	6.00	12	22.00	26.00	20.00
06	10.00	14.00	8.00	13	24.00	28.00	22.00
07	12.00	16.00	10.00	14	26.00	30.00	24.00
08	14.00	18.00	12.00	15	28.00	32.00	26.00



RoHS Compliant

GENERAL TOLERANCE:
 .X ± 0.2
 .XX ± 0.15

UNIT: MM

SCALE: 1:1

SHEET: 1 / 1

PROJECTION:



2.00mm Wire to Board Wafer

PART NO:

2417SJ-XX

SIZE

A4