



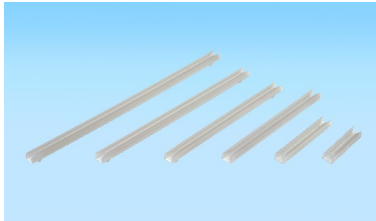
ACCESORIOS

F

GUIAS DE PLAQUETA	F1
EXTRACTORES DE PLAQUETA	F1
PRECINTOS	F1
SOPORTES Y ESPACIADORES	F2
PASACABLES Y PATAS DE GOMA	F5
AISLANTES, BUJES Y DISIPADORES	F5
TERMOCONTRAIBLES	F7
GABINETES	F8

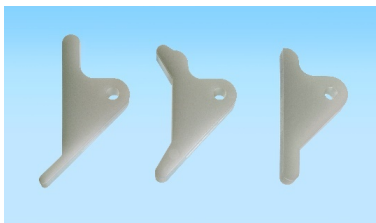
F - ACCESORIOS

GUIAS DE PLAQUETA



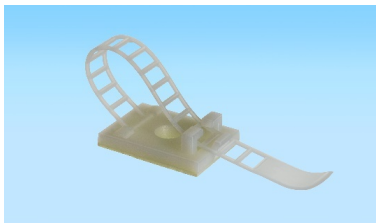
CODIGO	DESCRIPCION
CG-38	GUIA DE PLAQUETA (LARGO 38MM)
CG-50	GUIA DE PLAQUETA (LARGO 50MM)
CG-350	GUIA DE PLAQUETA (LARGO 90MM)
CG-400	GUIA DE PLAQUETA (LARGO 102MM)
CG-500	GUIA DE PLAQUETA (LARGO 127MM)
CG-600	GUIA DE PLAQUETA (LARGO 152MM)

EXTRACTORES DE PLAQUETA



CODIGO	DESCRIPCION
CP-15	EXTRACTOR P/ CIRCUITO IMPRESO
CP-20	EXTRACTOR P/ CIRCUITO IMPRESO
CP-25	EXTRACTOR P/ CIRCUITO IMPRESO

PRECINTOS

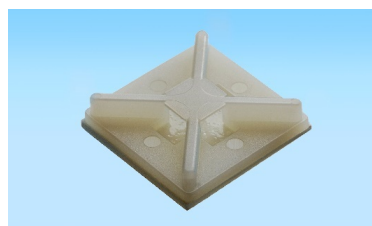


CL-2

CODIGO	DESCRIPCION
CL-2	PRECINTO CON SOPORTE 85MM
CL-7	PRECINTO CON SOPORTE 55MM
CM-13	BASE AUTOADHESIVA P/PRECINTO
CM-19	BASE AUTOADHESIVA P/PRECINTO
ST-2	PRECINTO P/CABLE ENROLLADO
ST-3	PRECINTO P/CABLE ENROLLADO
TH-1	BASE PARA PRECINTO
VCO-888	PRECINTO DE VELCRO L = 120MM
YJ-100	PRECINTO 100MM
YJ-123	PRECINTO 123MM CON SOPORTE
YJ-142	PRECINTO 142MM ANCHO 3.6MM
YJ-142S	PRECINTO 142MM ANCHO 2.5MM
YJ-200	PRECINTO 200MM ANCHO 4.8MM NEG
YJ-400	PRECINTO 400MM ANCHO 4.8MM NEG
YJ-98X	PRECINTO 100MM C/MARKER



CL-7



CM-XX



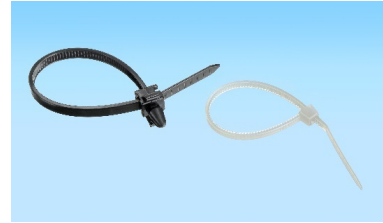
ST-2



TH-1

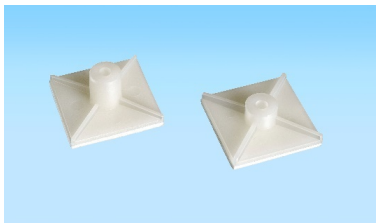


YJ-98X

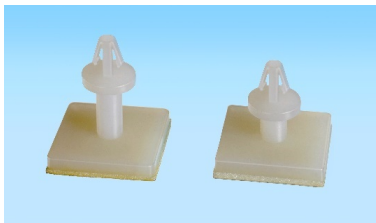


YJ-XXX

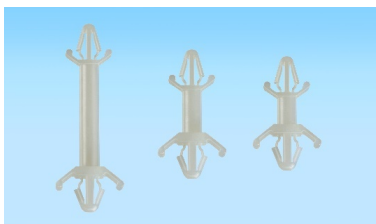
SOPORTES Y ESPACIADORES



ASR-XX



BSS-XX



CBS-XX

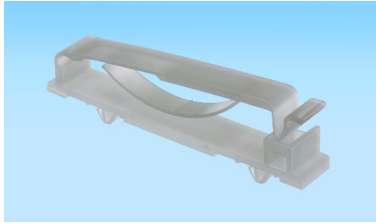


DT-1 DTA-1

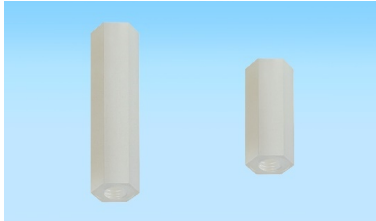


FCCD-1

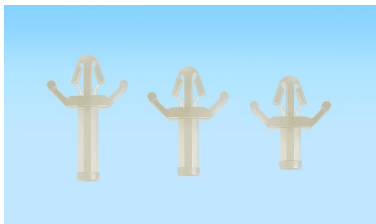
CODIGO	DESCRIPCION
ASR-6	SOPORTE AUTOADHESIVO 6.4MM TOR
ASR-11	SOPORTE AUTOADHESIVO 11MM TOR
BSS-6	SOPORTE AUTOADHESIVO 6.0MM
BSS-9	SOPORTE AUTOADHESIVO 9.0MM
BSS-12	SOPORTE AUTOADHESIVO 12.0MM
CBS-5	SOPORTE P/ C.I. LARGO 5.0MM
CBS-6	SOPORTE P/ C.I. LARGO 6.0MM
CBS-9	SOPORTE P/ C.I. LARGO 9.0MM
CBS-12	SOPORTE P/ C.I. LARGO 12.5MM
CBS-15	SOPORTE P/ C.I. LARGO 15.7MM
CBS-25	SOPORTE P/ C.I. LARGO 25.4MM
DT-1	TRABA DE PUERTA
DTA-1	TRABA CONTRAPIEZA DE DT-1
CCO-6B	SOPORTE PARA CABLE
FCCD-1	SOPORTE PARA CABLES
FDT-4	SOPORTE PARA CABLE PLANO
HP-5	ESPACIADOR ROSCADO L = 5.0MM
HP-8	ESPACIADOR ROSCADO L = 8.0MM
HP-10	ESPACIADOR ROSCADO L = 10.0MM
HP-12	ESPACIADOR ROSCADO L = 12.7MM
HP-15	ESPACIADOR ROSCADO L = 15.0MM
HP-20	ESPACIADOR ROSCADO L = 20.0MM
HP-22	ESPACIADOR ROSCADO L = 22.0MM
HP-25	ESPACIADOR ROSCADO L = 25.0MM
HP-45	ESPACIADOR ROSCADO L = 45.0MM
KVLM4-10B	ESPACIADOR ROSCADO L = 10.0MM
LAS-9	ESPACIADOR DE C.I. L = 9.6MM
LAS-12	ESPACIADOR DE C.I. L = 12.7MM
LAS-16	ESPACIADOR DE C.I. L = 15.9MM
LAS-19	ESPACIADOR DE C.I. L = 19.1MM
M-2	TUERCA P/M2-X Y TP2-X M2.0X0.4
M2-6	TORNILLO PLASTICO L = 6MM M2X0.4
M2-8	TORNILLO PLASTICO L = 8MM M2X0.4
M-3	TUERCA P/M3-X Y TPS-X M3X0.5P
M3-10	TORNILLO PLASTICO P/TPS Y HP
M3-6	TORNILLO PLASTICO P/TPS Y HP
MAE-5T	SOPORTE P/ C.I. ROSCADO 5.0MM
MAE-8T	SOPORTE P/ C.I. ROSCADO 8.0MM
MAE-10T	SOPORTE P/ C.I. ROSCADO 10.0MM
MAE-15T	SOPORTE P/ C.I. ROSCADO 15.0MM
MAE-20T	SOPORTE P/ C.I. ROSCADO 20.0MM
MB-5	SOPORTE P/ C.I. TIPO BOTON
MSP-5	ESPACIADOR DE C.I. L = 5.0MM



FDT-4



HP-XX

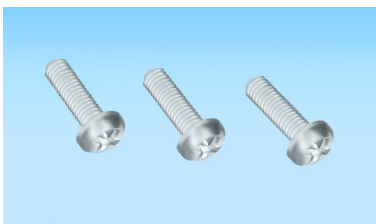


LAS-XX



M2-8

M2-6



M3-10

- MSP-10**
- MSP-15**
- MSP-22**
- MSP-5-M**
- MSP-10-M**
- MSP-15-M**
- MSPS-5**
- MWC-6**
- MWC-10**
- PCBS-10**
- PR-1**
- PR-5**
- RCB-5**
- RCB-8**
- RCB-10B**
- RCB-12**
- RCB-15**
- RCB-25**
- RCB-35**
- RCC-5**
- RCC-8**
- RCC-12**
- SS-3**
- SS-5**
- SS4-12**
- SWB-6**
- SWB-12**
- SWB-16**
- TCBS-5**
- TCBS-10**
- TCBS-15**
- TCBS-35**
- TP2-5S**
- TP2-8S**
- TP2-10S**
- TP2-15S**
- TP4-12LB**
- TP4-20LB**
- TP4-35LB**
- TP-5**
- TP-8**
- TP-8LB**
- TPS-10**
- TPS-15**
- WSS-2**

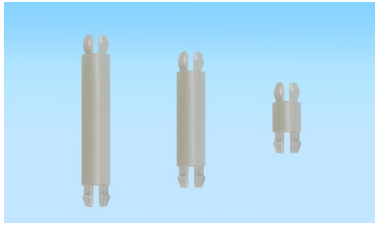
- ESPACIADOR DE C.I. L = 10.5MM
- ESPACIADOR DE C.I. L = 15.9MM
- ESPACIADOR DE C.I. L = 22.0MM
- ESP. DE C.I. L = 5.0MM METAL
- ESP. DE C.I. L = 10.0MM METAL
- ESP. DE C.I. L = 15.0MM METAL
- SOPORTE CON ROSCA
- SOPORTE PARA CABLES
- SOPORTE PARA CABLES
- SOPORTE P/C.I. LARGO 10.0MM
- SOPORTE C/TORNILLO DIAM 8MM
- SOPORTE C/TORNILLO DIAM 5MM
- SOPORTE P/ C.I. L = 5.0MM
- SOPORTE P/ C.I. L = 8.0MM
- SOPORTE P/ C.I. L = 10MM NEGRO
- SOPORTE P/ C.I. L = 12.7MM
- SOPORTE P/ C.I. L = 15.9MM
- SOPORTE P/ C.I. L = 25.4MM
- SOPORTE P/ C.I. L = 35.0MM
- SOPORTE P/ C.I. L = 5.0MM
- SOPORTE P/ C.I. L = 8.0MM
- SOPORTE P/ C.I. L = 12.0MM
- ESPACIADOR DE C.I. L = 3.2MM
- ESPACIADOR DE C.I. L = 4.8MM
- ESPACIADOR DE C.I. L = 12.7MM
- ESPIRAL PLASTICO D = 6.0MM
- ESPIRAL PLASTICO D = 12.0MM P/MT
- ESPIRAL PLASTICO D = 16.0MM
- SOPORTE P/ C.I. L = 5.0MM
- SOPORTE P/ C.I. L = 10.0MM
- SOPORTE P/ C.I. L = 15.0MM
- SOPORTE P/ C.I. L = 35.0MM
- ESPACIADOR ROSCADO L = 5.0MM
- ESPACIADOR ROSCADO L = 8.0MM
- ESPACIADOR ROSCADO L = 10.0MM
- ESPACIADOR ROSCADO L = 15.0MM
- ESPACIADOR ROSCADO L = 12.0MM
- ESPACIADOR ROSCADO L = 20.0MM
- ESPACIADOR ROSCADO L = 35.0MM
- ESPACIADOR ROSCADO L = 5.0MM
- ESPACIADOR ROSCADO L = 8.0MM
- ESPACIADOR ROSCADO L = 8.0MM
- ESPACIADOR ROSCADO L = 10.0MM
- ESPACIADOR ROSCADO L = 15.0MM
- SOPORTE PARA CABLES



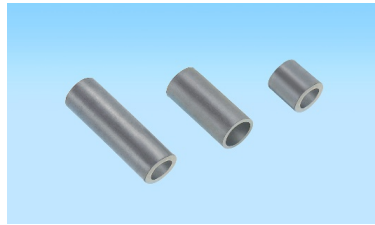
MAE-XXT



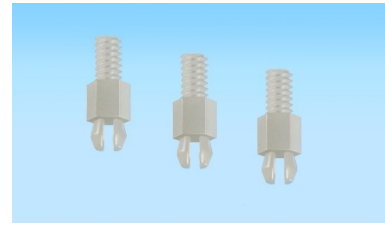
MB-5



MSP-XX



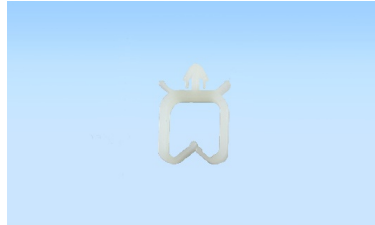
MSP-XX-M



MSPS-XX



MWC-6



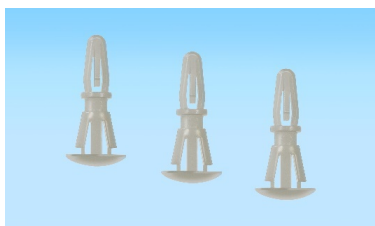
MWC-10



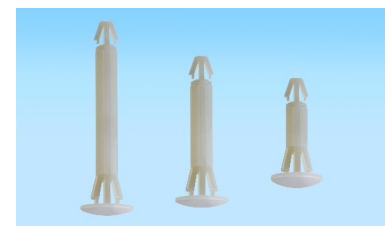
PR-1



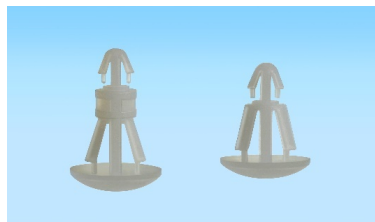
PR-5



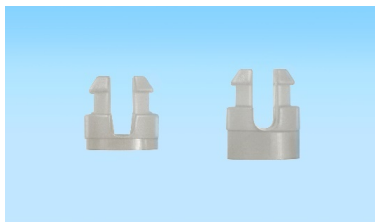
PCBS-XX



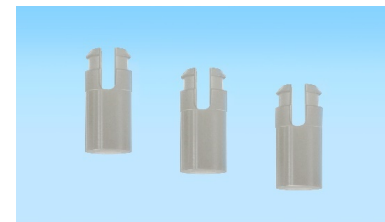
RCB-XX



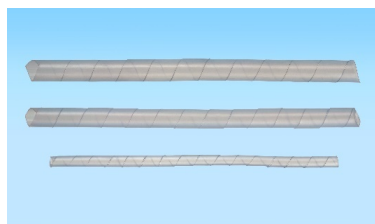
RCC-XX



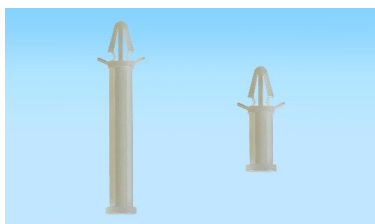
SS-X



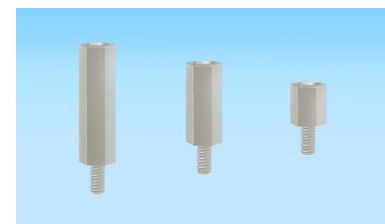
SS4-XX



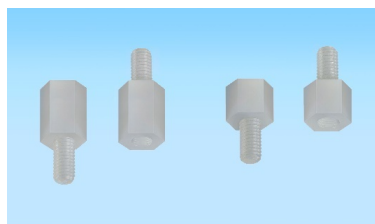
SWB-XX



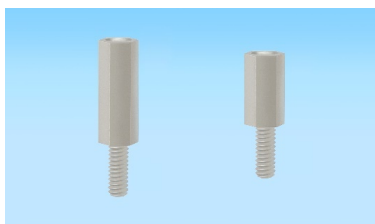
TCBS-XX



TP2-XXS



TP-X



TPS-XX



WSS-2

PASACABLES Y PATAS DE GOMA

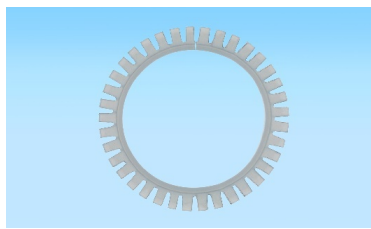
CODIGO	DESCRIPCION
GM-1A	PASACABLES DE GOMA D= 6.4MM
GM-2	PASACABLES DE GOMA D= 8.0MM
GM-3	PASACABLES DE GOMA D= 9.5MM
GM-4	PASACABLES DE GOMA D= 12.7MM
GM-5	PASACABLES DE GOMA D= 17.5MM
GM-68	PASACABLES DE GOMA D= 12.1MM
KG-016	PASACABLES EN TIRA POR METRO
KGB12-07	PRENSACABLE PLASTICO 6,8/4MM
LGT-6G	PASACABLES DE GOMA L= 14.5MM
NF-002ST	PATA DE GOMA D= 11.5MM
NF-015ST	PATA DE GOMA D= 20.2MM
NF-016ST	PATA DE GOMA D= 14.0MM
RF-002	PATA DE GOMA D= 10.0MM
RF-018	PATA DE GOMA D= 22.1MM
TNF-1	PATA DE GOMA D= 9.5MM
TNF-3	PATA DE GOMA D= 13.0MM



GM-X



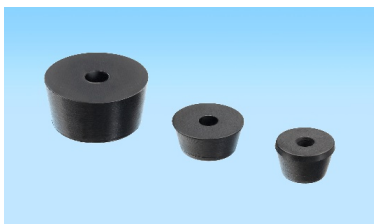
GM-68



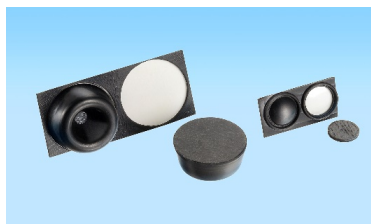
KG-016



LGT-6G



NF-XXXST



RF-018

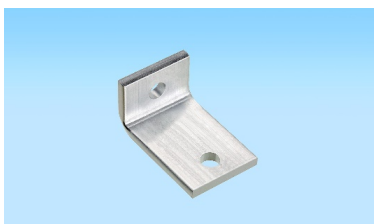
RF-002



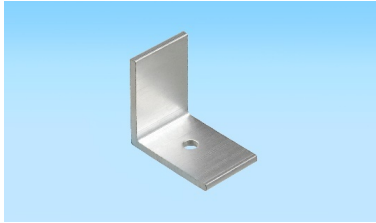
TNF-X

ASLANTES, BUJES Y DISIPADORES

CODIGO	DESCRIPCION
D-125	DISIPADOR ALETA TIP 13X23X16
D-1825	DISIPADOR ALETA TIP 25X25X16
D-2125D	DISIPADOR TO-3 29X29X29
D-2225D	DISIPADOR TO-220 12X28X12
D-2226ND	DISIPADOR U TIP 12X28X12X27 AD
D-2725D	DISIPADOR TIP 29X29X29
D-5225D1	DISIPADOR TO-220 29X29X25
D-5225D2	DISIPADOR TO-220 29X29X25
D-5235FD	DISIPADOR TIP 20X20X20



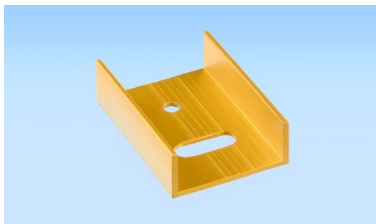
D-125



D-1825



D-2125D



D-2225D

- D-5245D**
- D-5455AC**
- D-5455DC**
- D-6025D1**
- D-6225D**
- D-6225T**
- D-9075D**
- D-9325D**
- D-LEDSTAR**
- D-ZD25**
- D-ZD6**
- D-ZD7**
- HARDWARE04**
- TO-220**
- TO-3**
- TO-3P**
- TW-3**
- TW-7N**

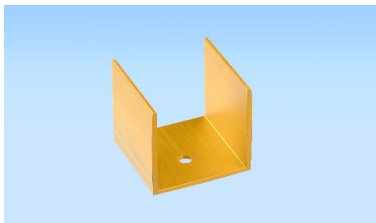
- DISIPADOR TIP 20X25X20
- DISIPADOR TIP 25X15X25 AG.CENT
- DISIPADOR TIP 25X15X25
- DISIPADOR SUP = 525,1 MM2/MM
- DISIPADOR T0220 TIPO F
- DISIPADOR TIP 37X12X15
- DISIPADOR TIP 15X15X15
- DISIPADOR U TIP 10X14X10
- DISIPADOR ESTRELLA P/LED 1W
- DISIPADOR P/TO-3 TIPO ARAÑA
- DISIPADOR SUP = 626,5 MM2/MM
- DISIPADOR SUP = 1200,9 MM2/MM
- KIT PARA TIP-220 Y TO-3
- AISLANTE PARA TO-220
- AISLANTE PARA TO-3
- AISLANTE PARA TO-218
- BUJE P/TRANSISTORES TO-220
- BUJE P/TRANSISTORES TO-3



D-2226ND



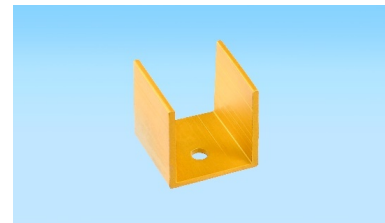
D-2725D



D-5225D1



D-5225D2



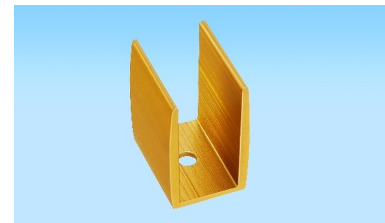
D-5235FD



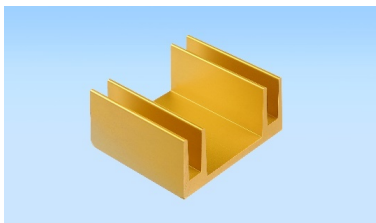
D-5245D



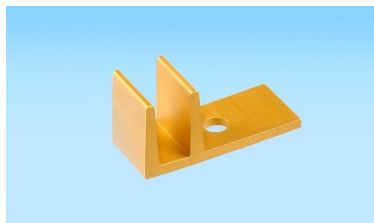
D-5455DC



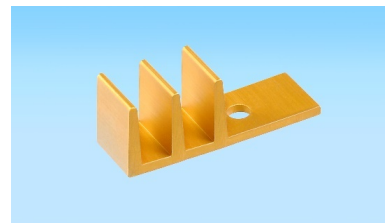
D-5455AC



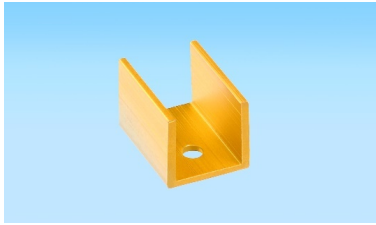
D-6025D1



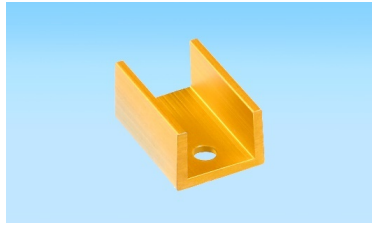
D-6225D



D-6225T



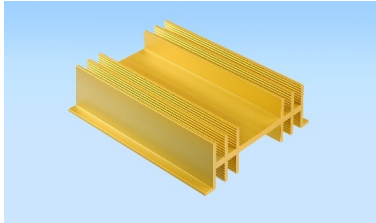
D-9075D



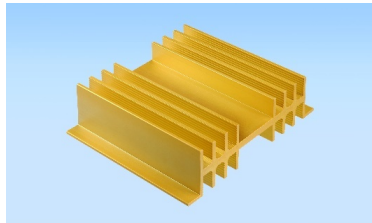
D-9325D



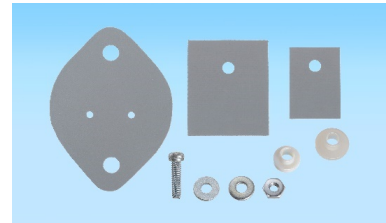
D-ZD25



D-ZD6



D-ZD7



TO-3 TO-3P TO-220

TERMOCONTRAIBLES

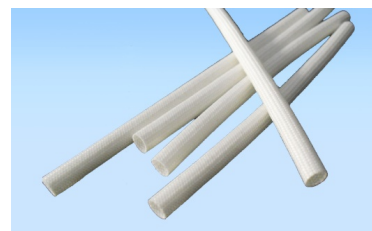


CINTA-AIS

CODIGO	DESCRIPCION
CINTA-AIS	CINTA AISLADORA 3M 18MM 10M
CINTA-BIFAZ	CINTA BIFAZ 10MM X 5MTS
T1	SPAGHETTI FIBRA DE VIDRIO 1MM
T5	SPAGHETTI FIBRA DE VIDRIO 5MM
T10	SPAGHETTI FIBRA DE VIDRIO 10MM
TPT-1.0	TERMOCONTRAIBLE 1.0MM 2:1
TPT-1.5	TERMOCONTRAIBLE 1.5MM 2:1
TPT-2.0	TERMOCONTRAIBLE 2.0MM 2:1
TPT-3.0	TERMOCONTRAIBLE 3.0MM 2:1
TPT-4.5	TERMOCONTRAIBLE 4.5MM 2:1
TPT-6.0	TERMOCONTRAIBLE 6.0MM 2:1
TPT-9.0	TERMOCONTRAIBLE 9.0MM 2:1
TPT-20.0	TERMOCONTRAIBLE 20.0MM 2:1



CINTA-BIFAZ

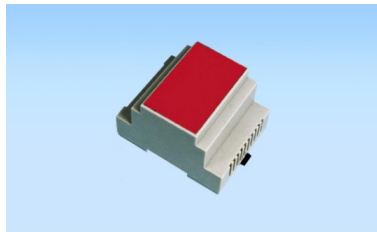


TX

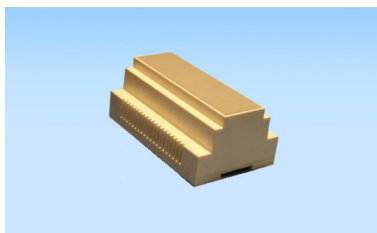


TPT-X

GABINETES



GAB-01



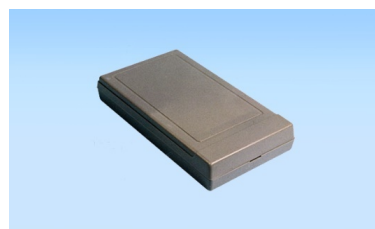
GAB-02



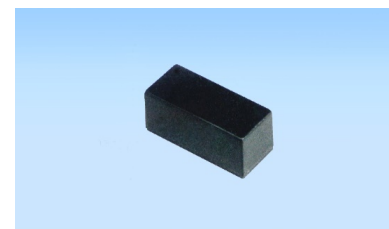
GAB-03



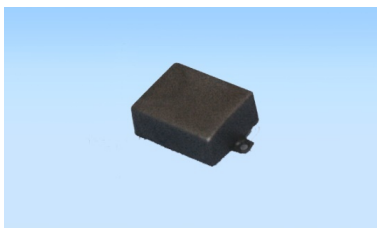
GAB-05



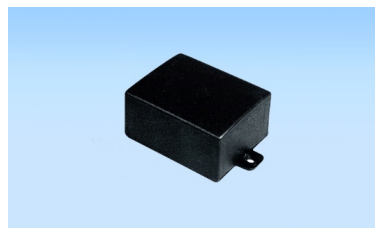
GAB-06



GAB-10



GAB-20

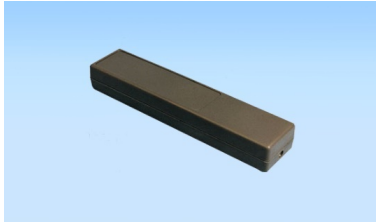


GAB-30

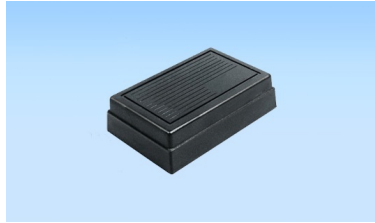


GAB-35

CODIGO	DESCRIPCION
GAB-01	GAB P/RIEL DIN 90X70X60
GAB-02	GAB P/RIEL DIN 90X140X60
GAB-03	CAJA P/CONTROL REMOTO 4 TECLAS
GAB-05	GAB PLAST 134X75X24MM C/VISOR
GAB-06	GABINETE PLASTICO 134X75X24MM
GAB-10	GABINETE PLASTICO 35X15X16MM
GAB-20	GABINETE PLASTICO 54X44X29MM
GAB-30	GABINETE PLASTICO 46X37X20MM
GAB-31	GABINETE PLASTICO 64X44X20MM
GAB-35	GABINETE PLASTICO 100X55X41MM
GAB-36	GABINETE PLASTICO 75X55X29MM
GAB-37	GABINETE PLASTICO 161X35X23MM
GAB-40	GABINETE PLASTICO 116X74X34MM
GAB-50	GABINETE PLASTICO 109X74X71MM
GAB-55	GABINETE PLASTICO 123X85X45MM
GAB-56	GABINETE PLASTICO 123X85X36MM
GAB-57	GABINETE PLASTICO 190X112X37MM
GAB-58	GABINETE PLASTICO 190X140X55MM
GAB-60	GABINETE PLASTICO 88X61X24MM
GAB-61	GABINETE ESTANCO 157X80X65MM
GAB-62	GABINETE ESTANCO 215X118X65MM
GAB-63	GABINETE ESTANCO 300X210X80MM
GAB-65	GABINETE PLASTICO 124X75X45MM
GAB-66	GABINETE PLASTICO 124X250X40MM
GAB-70	GABINETE PLASTICO 135X179X40MM
GAB-80	GABINETE PLASTICO 135X179X65MM
GAB-85	GABINETE PLASTICO 135X179X90MM
GAB-86	GABINETE PLASTICO 153X84X61MM
GAB-87	GABINETE PLASTICO 253X176X76MM
GAB-90	GABINETE PLASTICO 172X123X61MM
GAB-91	SUJECION PLASTICA P/PARED



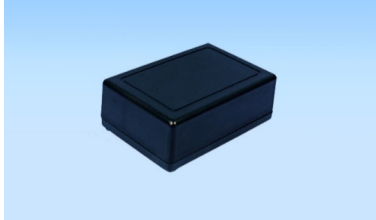
GAB-37



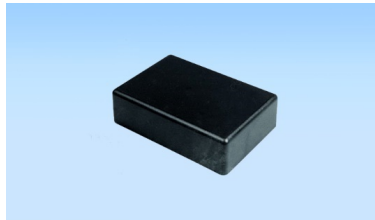
GAB-40



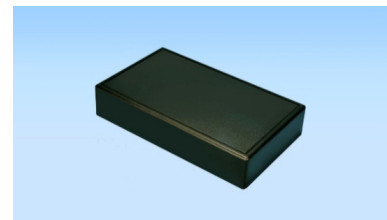
GAB-50



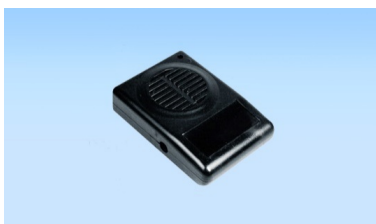
GAB-55



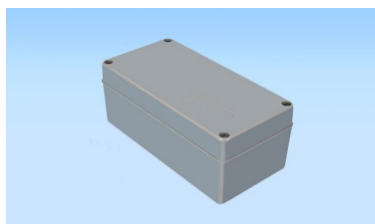
GAB-56



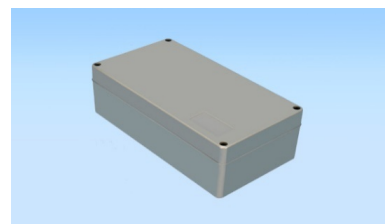
GAB-57



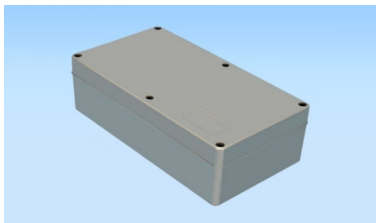
GAB-60



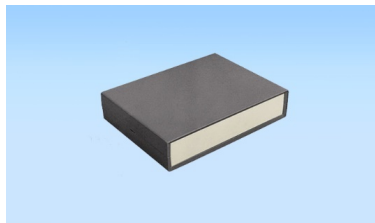
GAB-61



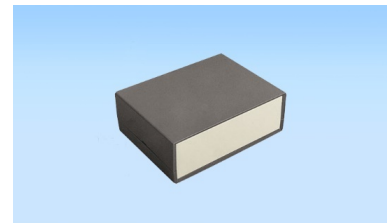
GAB-62



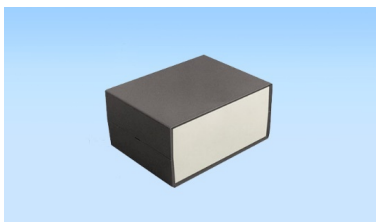
GAB-63



GAB-70



GAB-80



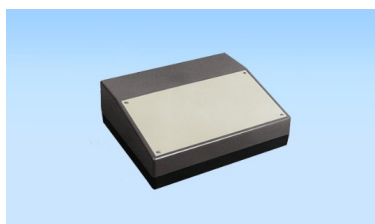
GAB-85



GAB-86



GAB-87



GAB-90